

TexNov



TEXPRO BASE PROMIX

Cement base coat Adhesive & levelling coat

TexPro base Promix is a mixture composed of 100% acrylic resin that, once mixed with Portland cement, will serve either as an adhesive, or as a base coat layer to prepare the surface to receive the finish coat.

TexNov

Acrylic Coatings
Manufacturer

TEXPRO BASE PROMIX

Cement base coat - Adhesive & levelling coat

1- Product description

TexPro base Promix is a mixture composed of 100% acrylic resin with inorganic pigments, granules of marble, sand quartz, silica, additives and high performance fungicide aggregates. The product contains fiber. Once mixed with Portland cement, the **TexPro base Promix** will serve either as an adhesive, or as a base coat layer to prepare the surface to receive the finish coat. **TexPro base Promix** product is considered easier to mix with cement and easier to apply than **TexPro Base Express**.

TexPro base Promix layer must be of minimum 3/32" (2.4 mm) and applied in two coats according to **TexNov inc.** specifications.

2- Covered surface area

An 18.9L container covers about 140 ft² (13m²).

3- Mixture

Mix **TexPro base Promix** in proportions of 1:1 by volume with **Portland cement type 1 GU** cement with a paddle mixer. Let the mixture stand 5 minutes. Mix again by adding a small amount of **TexPro base Promix** if necessary. A small amount of clean water can be added if necessary; up to a cup maximum. Prepare only half of the **TexPro base Promix** container each time.

Portland cement type 1 GU meets the ASTM C 150 and CSA A3000-08 standards.

Portland cement type 1 GU meets the following norms:

- A3000 CSA Standard on binder materials
- National Building Code of Canada (NBCC)
- Provincial-building codes: Ontario, Quebec, British Columbia, Nova Scotia.

4- Installation

Surface preparation:

The surfaces to be recovered must not be painted, be clean, dry and form an adequate structure. They must be free of grease, oil, and other products that will prevent good bonding prior to application.

Installation:

Once mixed, installation of the product must be within approximately 1 hour depending on the ambient temperature. Keep containers closed when not using the mixture. Surface and ambient air temperature should be 5°C (41°F) or higher and remain so for a minimum of 24 hours.

Temporary protection:

For as long as the installation of the Base Coat, the finish coating, flashings, and sealants, have not been completed, you should protect the wall against rain, weather and other potential damage.

Drying:

TexPro base Promix drying time depends on the wind, ambient air and relative humidity. Under normal drying conditions (21°C and 55% RH), drying time is 24 hours.

Cleaning:

Clean tools with water while the **TexPro base Promix** mixture is still wet.

Applying TexPro base Promix as an adhesive:

To apply on treated gypsum panels, mounted on a wood, metal or concrete frame, use a serrated trowel to spread a uniform layer of **TexPro base Promix** over the entire surface of the insulation panel. Complete the installation by adding 4 anchors such as screws treated with washers in plastic or plastic nails that will be installed in the wood, metal frame or concrete substrate. See section 7 for technical drawings.

The screws with plastic washers are accessories distributed by **TexNov inc.**

Immediately place the insulation panel onto the substrate making sure that there is no **TexPro base Promix** in the joints. **TexPro base Promix** must not begin to dry on the insulation panel before it is put onto the substrate, as its adhesion could be reduced.

Application of *TexPro Base Express* as a base coat layer:

If *TexPro base Promix* is used as a base coat on expanded polystyrene insulation panels (EPS), the EPS must be sanded. Apply *TexPro base Promix* over the entire surface of the insulation. Embed the fiberglass mesh into the base coat passing the trowel from the center to the edges of the reinforcement mesh to avoid creasing it.

The mesh must be continuous at the corners and overlap. There must be enough *TexPro base Promix* to completely embed the mesh. All the places requiring superior impact resistance should be detailed on the plans and described in the designers specification documents. The *TexPro base Promix* layer must be of minimum 3/32" (2.4 mm) and applied in two coats according to *TexNov inc.* specifications.

5- Product storage

TexPro base Promix should be stored at 5°C (41°F) or above in well sealed containers. Keep away from frost. The service life of the product is 1 year.

6- Transportation conditions

Regulated shipping name: Not applicable.
TDM category: Not regulated.

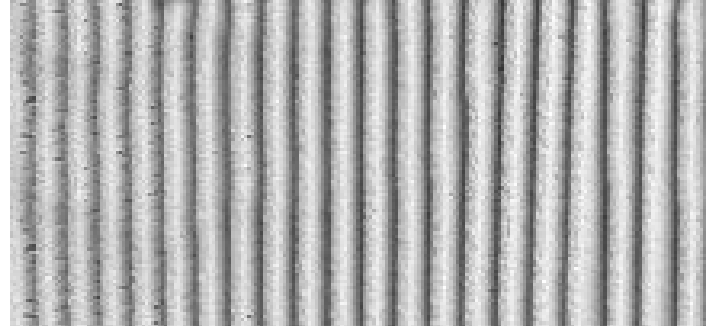
Note: This product requires no special measures for international transport.

Performance of <i>TexPro base Promix</i>	
Test Requirement	Result
48 h water absorption^{*1} CCMC 5.3.6 ≥ 20 %	14.4 %
2 h water immersion^{*1} CCMC 5.3.5 ≥ 90 % waterproof	Successful

^{*1} Test at the *TexNov inc.* lab following the CCMC 716.1 directives.

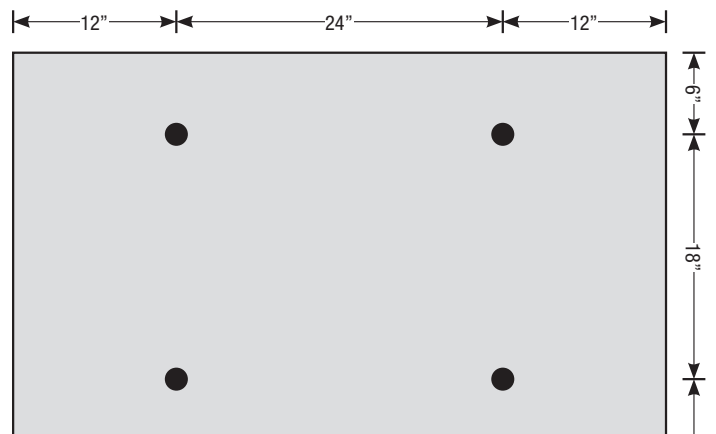
7- *TexPro base Promix* technical drawings

TexPro base Promix application on insulation panels.



Create the effect of grout installation with a notched trowel from top to bottom, creating parallel lines. It is important that the adhesive strips do not touch each other and do not form a 'V'.

Layout of treated screws on the polystyrene panels.



SAFETY DATA SHEET

SECTION 1 - IDENTIFICATION

PRODUCT	COMPANY IDENTIFICATION
<p>Name: TexPro Base Primix Description: Adhesive and leveling coat Restriction of use: Sanding or grinding the dried product emits dangerous dust</p>	<p>TexNov inc. 839 Joseph-Louis-Mathieu Sherbrooke, Québec, Canada J1R 0X3 Emergency Phone Number: 1 877 316-6388</p>

SECTION 2 - HAZARD IDENTIFICATION

Pictograms



Warning statements

DANGER

Product classification

Specific target organ toxicity - repeated exposure - Category 1

Hazard statements

Causes damage to organs (liver, spleen, kidneys, lymph node) after repeated exposure or prolonged exposure.

Precautionary statements

Prevention: Do not breathe dust / fume / gas / mist / vapors / spray. Wash hands thoroughly after handling. Do not eat, drink or smoke when handling this product.

Wear gloves and safety glasses. Use in a well-ventilated area. Inhalation of sanding dust or grinding of the dry product may be harmful. These dusts can cause irritation to the respiratory tract and can damage organs (lungs). This product contains ingredients that are considered carcinogenic if transformed into dust.

Intervention - Consult a doctor if you feel unwell.

INGESTION: Call Poison Control Center or doctor immediately. Do not induce vomiting unless advised by the doctor. **EYES:** Immediately flush with plenty of water for 15 minutes, occasionally lifting the eyelids. **SKIN:** wash with soap and water. Take off immediately all contaminated clothing. **INHALATION:** If person is not breathing, give artificial respiration and seek medical attention. If breathing is difficult, remove victim to fresh air.

STORAGE: Store at 5 to 30°C in a closed plastic container. Keep away from frost.

DISPOSAL: Dispose of contents and container in accordance with local regulations.

SECTION 3 - COMPOSITION / INFORMATION ON THE COMPONENTS

Ingredient	CAS number	% (weight/weight)
Crystalline silica (Quartz).	14808-60-7	15-40

The Crystalline silica (Quartz) content of the product is considered encapsulated or embedded in the binder polymer and not bio-accessible by inhalation in normal use of the product. Based on current knowledge and applicable concentrations, there are no other ingredients in this product that are classified as hazardous by GHS and that should be reported in this section.

SECTION 4 - FIRST AIDS

Eye contact: Flush eyes with water. Consult a physician if irritation persists.

Skin contact: Soap and rinse exposed area thoroughly. Consult a physician if irritation persists.

Ingestion: Rinse mouth with water. Do not induce vomiting unless prompted by medical advice. Do not swallow anything to an unconscious person.

Inhalation: Move the person to a well-ventilated area. Consult a doctor if headaches persist.

SECTION 5 - MEASURE IN CASE OF FIRE

Non-flammable product, but it may splash if heated above boiling point.

Combustion product: If the product is heated to combustion, after the release of water vapor, carbon oxides will be emitted.

Use the appropriate extinguisher.

SECTION 6 - MEASURES TO BE TAKEN IN CASE OF ACCIDENTAL DISPERSION

Pick up all the dispersion with a shovel and eliminate the discards. Do not send the dispersion into the sewer, occurs can clog the piping.

SECTION 7 - HANDLING AND STORAGE

Handling safety precaution: Do not eat, smoke or drink in the work area. Wash hands after handling. Avoid contact with hands and eyes.

Storage safety conditions: Keep in a dry place away from frost and sunlight. The product may coagulate. The storage temperature is 5 to 30°C. Keep in a closed plastic container.

SECTION 8 - EXPOSURE CONTROL / PERSONAL PROTECTION

CONTROL PARAMETERS:

Occupational Exposure Limits: Sanding or grinding this product in its dry form may produce particles of crystalline silica.

Breathable dust	RSST		ACGIH TLV	
	VEMP	DIVS	TWA	STEL
Crystalline silica (Quartz)	0.1 mg/m ³	50 mg/m ³	0.025mg/m ³	Not available

RSST : Regulation respecting occupational health and safety; VEMP : Weighted average exposure value

DIVS : Immediate danger to life and health; ACGIH : American Conference of Governmental Industrial Hygienists

TLV : Threshold limit value; TWA : Time-weighted average; STEL : Short-term exposure limit

Individual protection measures

Respiratory protection: Wear appropriate respiratory protection if dusts / fumes / gases / mists / vapors / aerosols are possible above permissible limits. Use in a well ventilated place.

Eye Protection: To reduce exposure, wear safety glasses.

Hand protection: To reduce exposure, wear gloves. Wash your hands thoroughly after using the product. Do not eat, drink or smoke when handling this product.

SECTION 9 - PHYSICAL AND CHEMICAL PROPERTIES

Appearance: Creamy with a slight gray color.

Odor: Low odor of ammonia.

Odor threshold: Not available

pH: 9-9.5.

Freezing point: 0°C

Boiling point: 100°C.

Evaporation rate: Not available.
Flammability (solid and gas): Not applicable.
Explosive limit: Not applicable.
Vapor pressure: Not available.
Vapor density: Not available.
Relative density: 1,5.
Solubility in water: may be diluted with water.
Partition coefficient n-octanol / water: Not available.
Auto-ignition temperature: Not applicable.
Decomposition temperature: Not available.
Viscosity: 12000 mm² / s (converted from measurement on Brookfield).

SECTION 10 - STABILITY AND REACTIVITY

Chemical stability: This product is considered stable under recommended storage conditions.
Reactivity: Incompatible with strong oxidants and strong acids.
Possibility of hazardous reactions: This product can not polymerize.
Hazardous decomposition product: If the product is heated to combustion, there will be emission of carbon oxides.

SECTION 11 - TOXICOLOGICAL DATA

Routes of entry: This product may be absorbed through the respiratory, digestive and cutaneous routes.
Acute toxicity (calculated GHS):

Product	DL ₅₀ oral, mg/kg	DL ₅₀ cutaneous, mg/kg	CL ₅₀ , mg/L
TexPro Base Promix	> 10000 (rat)	> 10000 (rabbit)	> 100 (rat)

Skin irritation: Virtually nil. An irritation of a mechanical nature is possible.
Irritation of the eyes: Not important. An irritation of a mechanical nature is possible.
Respiratory or skin sensitization: Virtually nil.
Specific target organ toxicity: Causes damage to organs (liver, spleen, kidneys, and lymph node) after repeated exposure or prolonged exposure.
Extract from the toxicological index linked to this mention: A very small proportion of silica can pass into the bloodstream in the form of silicic acid. The latter can be deposited in the liver, spleen and lymph nodes. The silicic acid is then excreted unchanged via the kidneys.
Carcinogenicity:
 The sanding or grinding of this product in its dry form can produce particles of crystalline silica which are considered carcinogen 1 according to IARC. Repeated inhalation of crystalline silica can cause lung damage and silicosis.

Ingredient	CIRC	ACGIH	NTP
Crystalline silica (Quartz)	Group 1	Group A2	K

CIRC : International Center for Research on Cancer. Group 2B : May be carcinogenic to humans. Group A4 : Non-classifiable substance as a carcinogen to humans. NTP : National Toxicology Program; N : Negative.

Reproductive toxicity: none.
Germ cell mutagenicity: none.

SECTION 12 - ECOLOGICAL DATA

Ecotoxicology: Not available.

Bioaccumulative potential: Not available.

Volatile organic compounds (V.O.C.): ≤ 50g / L.

SECTION 13 - DATA FOR DISPOSAL OF THE PRODUCT

Dispose of According to Municipal, Provincial and National Regulations.

SECTION 14 - TRANSPORT INFORMATION

Shipping Name: Not Applicable.

TDG Classification: Not Regulated.

SECTION 15 - REGULATORY INFORMATION

WHMIS 2015 Classification: Specific target organ toxicity, repeated exposure, Category 1.

The product classification and the SDS have been developed in accordance with the HPR.

SECTION 16 - OTHER INFORMATION

SDS prepared by: TexNov inc.

Emergency telephone number: 1-800-688-5990

Revision Date: 2017-11-13

Warning: The information and recommendations contained in this document have been written to the best of knowledge and technical data collected by TexNov inc. at the time of the revision. This document is intended to inform users of the product about the precautionary measures when using the product. No warranty is given on the properties mentioned on the products. No liability will be assumed for cases of misuse of the product or failure to observe the safety instructions contained in this document.